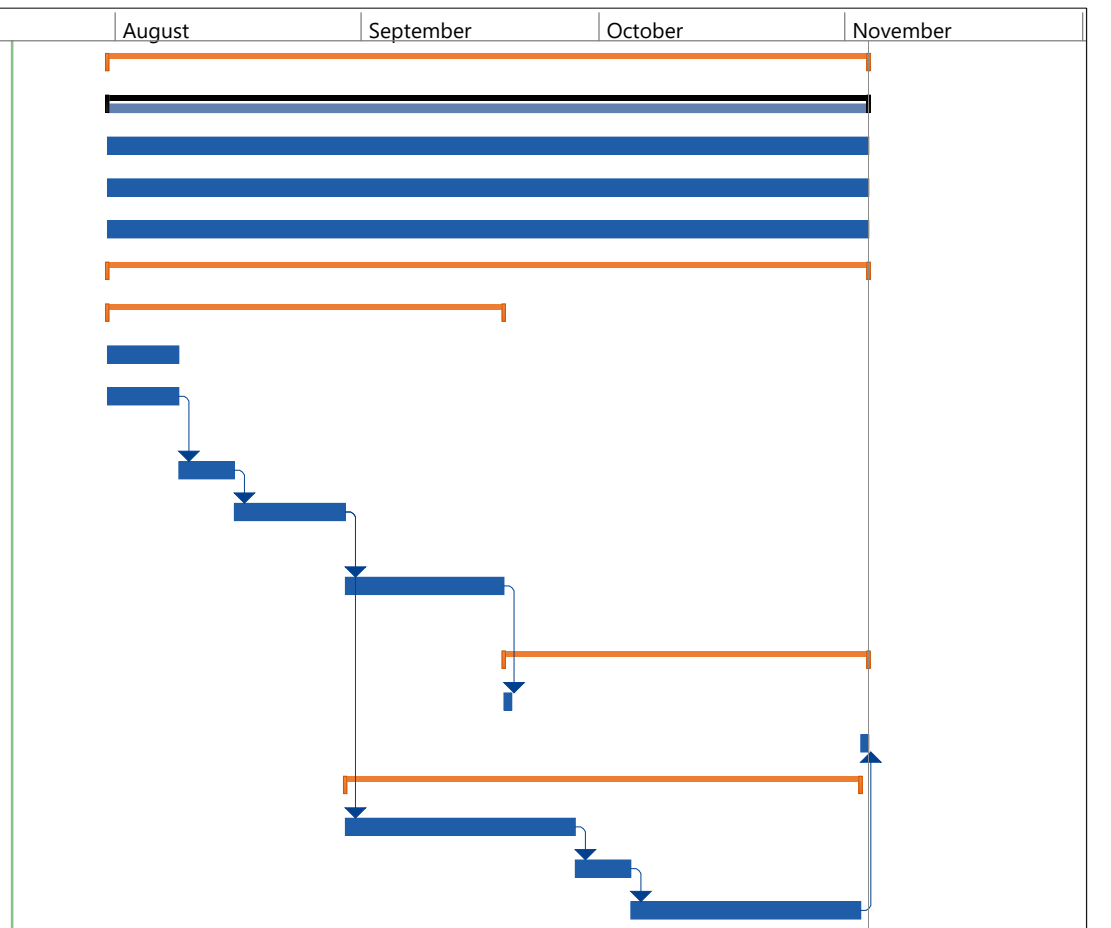


ID	Task Name	Duration	Start	Finish	Predecessors	July	August	September	October	November
1	<b>EDEN ISLE RESILIENCE - Pre-Construction Services Task Order</b>	<b>70 days</b>	<b>July 31, 2023*</b>	<b>November 3, 2023</b>						
2	<b>Project Management</b>	<b>70 days</b>	<b>July 31, 2023</b>	<b>November 3, 2023</b>						
3	<b>Communication Management</b>	<b>70 days</b>	<b>July 31, 2023</b>	<b>November 3, 2023</b>						
4	<b>Time and Cost Management</b>	<b>70 days</b>	<b>July 31, 2023</b>	<b>November 3, 2023</b>						
5	<b>Quality Management</b>	<b>70 days</b>	<b>July 31, 2023</b>	<b>November 3, 2023</b>						
6	<b>Concenptual Design &amp; Planning</b>	<b>70 days</b>	<b>July 31, 2023</b>	<b>November 3, 2023</b>						
7	<b>Overall Conceptual Plan and Alignment</b>	<b>36 days</b>	<b>July 31, 2023</b>	<b>September 18, 2023</b>						
8	Review of Existing Data and Planning Efforts	7 days	July 31, 2023	August 8, 2023						
9	Updated Alternatives Analysis (Design Elevation and Project Alignment Evalutation)	7 days	July 31, 2023	August 8, 2023						
10	Updated Alternative Project Cost Estimates	5 days	August 9, 2023	August 15, 2023	9					
11	Recommendation on Selected Alignment, Design Elevation, and Construction Phasing Plan	10 days	August 16, 2023	August 29, 2023	10					
12	Conceptual Planning Technical Memo (includes recommendations on preferred alternative)	14 days	August 30, 2023	September 18, 2023	11					
13	<b>Stakeholder Communication Management</b>	<b>34 days</b>	<b>September 19, 2023</b>	<b>November 3, 2023</b>						
14	Stakeholder Engagement with STLDCD & STPG Meeting 1	1 day	September 19, 2023	September 19, 2023	12					
15	Stakeholder Engagement with STLDCD & STPG Meeting 2	1 day	November 3, 2023	November 3, 2023	19					
16	<b>Phase I Conceptual Design (15% Design)</b>	<b>47 days</b>	<b>August 30, 2023</b>	<b>November 2, 2023</b>						
17	Phase I Conceptual Engineering and Design	21 days	August 30, 2023	September 27, 2023	11					
18	Phase I 15% Project Cost Estimate	5 days	September 28, 2023	October 4, 2023	17					
19	Phase I 15% Design - Technical Memo	21 days	October 5, 2023	November 2, 2023	18					



\*Schedule Start Date will be updated based on actual NTP issued by CPRA.

Eden Isle Resilience Pre-Construction TO		Task	Project Summary	Manual Task	Start-only	Deadline
Split		Inactive Task		Duration-only		Progress
Milestone		Inactive Milestone		Manual Summary Rollup		External Tasks
Summary		Inactive Summary		Manual Summary		External Milestone
						Manual Progress