

ST. TAMMANY COASTAL PROTECTION & RESTORATION

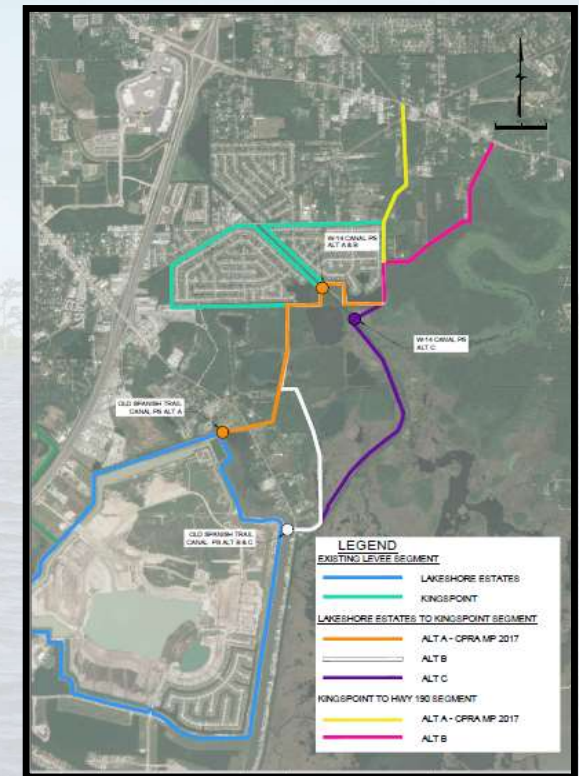




OLD BUSINESS

Slidell Levees - Eastern Segments (PO-184) – Schedule Update

- Working with CPRA to evaluate modified alignments to potentially reduce total project costs while increasing the number of protected structures:
 - Preliminary Data Collection – **Complete**
 - Survey, Geotechnical, Environmental
 - Hydrology/Hydraulic Data Collection – **Complete**
 - Basis of Design for the Project – **Complete**
 - Conceptual Engineering – **Complete**
 - Alternative Alignment Cost Analysis - **Complete**
- Neel-Schaffer is working with CPRA to evaluate land rights on each of the alternative alignments – **Complete**
- Draft Report to be Submitted to CPRA End of Oct. 2021



St. Tammany Parish Coastal Study Status

Phases of Study

Phase 1 – Collection & Organization of Flood Control Data

- *COMPLETED*

Phase 2 – Gap Analysis

- *COMPLETED*

Phase 3 – Project Feasibility Analysis & Engineering

- *Tasks 1, 2, & 3 – Draft Submitted 10-13-21*
 - *Will Incorporate Comments in Final Report*
- *Task 4 – Developing Contract Amendment*

ST. TAMMANY PARISH COASTAL PROTECTION
GAP ANALYSIS
NOVEMBER 2019

CONTRACT NO. 18-019 (PO-167) – TASK II

SPONSORED BY:

ST. TAMMANY PARISH GOVERNMENT

NEEL-SCHAFFER
Solutions you can build upon

GEC



NEW BUSINESS

STLDCD Capital Outlay Request 2021

1. **South Slidell/Fritchie Coastal Resilience:** Project will provide coastal resilience and flood risk reduction for the Southeast Slidell Community.
2. **Military Road Flood Risk Reduction:** Project will provide flood risk reduction for the Military Road communities. Project will also provide roadway infrastructure upgrades to support hurricane and tropical storm evacuation routes.
3. **Eden Isle Roadway Infrastructure Flood Resilience:** Project will provide flood protection and flood risk reduction for the Eden Isle Community. Project will also provide roadway infrastructure upgrades to support hurricane and tropical storm evacuation routes.
4. **Tchefuncte Shoreline Protection and Resilience Project:** The scope for this project includes protection of 2.7 miles worth of shoreline protection and resilience on the west side of Lake Pontchartrain near the western shoreline of the Tchefuncte River.
5. **Madisonville Flood Risk Reduction and Coastal Resilience:** Project will provide flood risk reduction for the Town of Madisonville and surrounding communities.