

NEEL-SCHAFFER

Solutions you can build upon

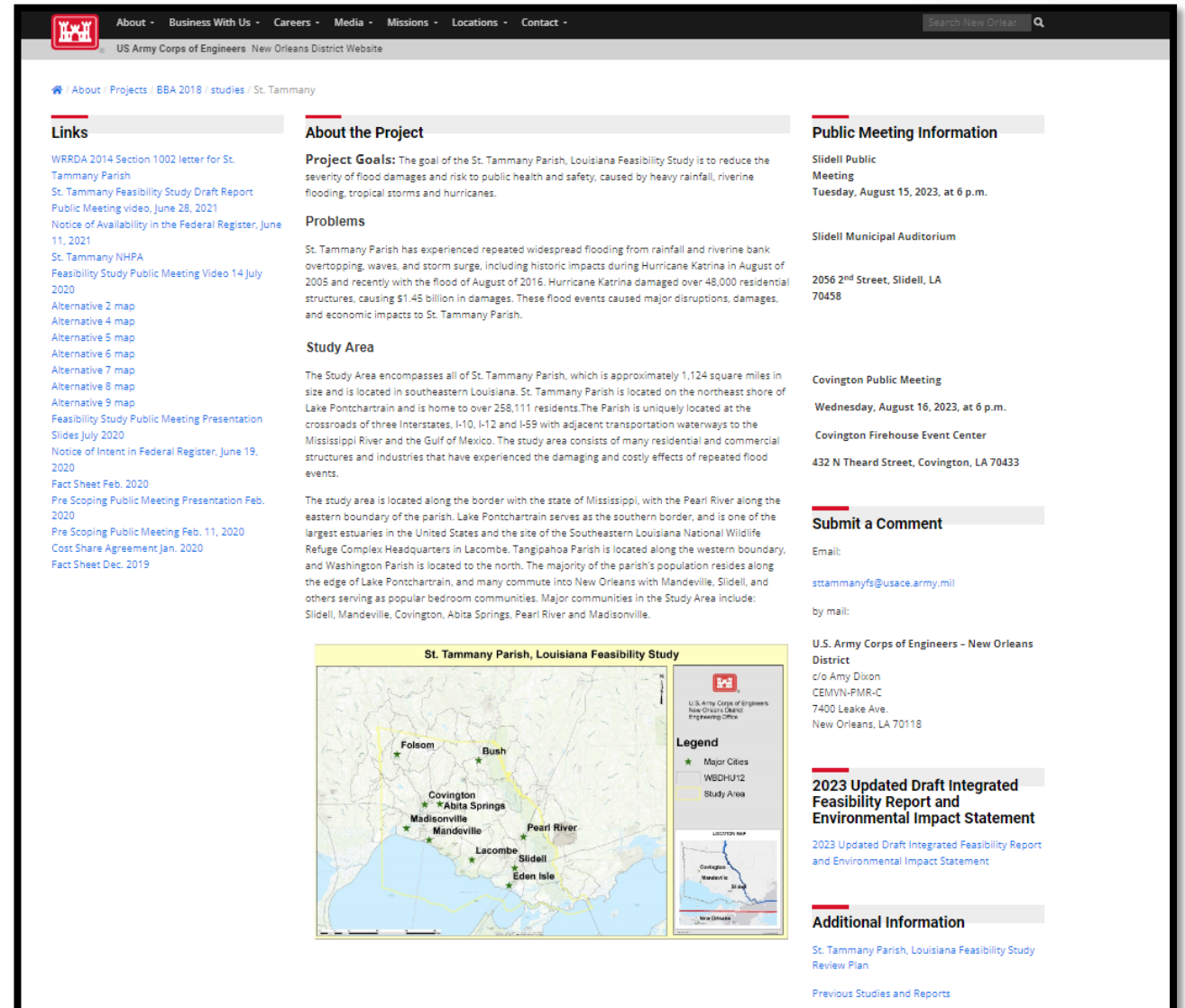
Update on USACE St Tammany Parish, LA Feasibility Study

Revised Draft Integrate Feasibility Report and Environmental Impact Statement

Please proceed to the following webpage on the updated report:

<https://www.mvn.usace.army.mil/About/Projects/BBA-2018/studies/St-Tammany/>

Click the link under 2023 Updated Draft Integrated Feasibility Report and Environmental Impact Statement.



The screenshot shows the official website for the St. Tammany Parish, Louisiana Feasibility Study. The page is organized into several sections:

- Links:** A list of documents and reports, including the WRRDA 2014 Section 1002 letter, the St. Tammany Feasibility Study Draft Report, and various public meeting videos and presentations from 2020 to 2023.
- About the Project:** A section detailing the project goals, which aim to reduce flood damages and risk to public health and safety. It also outlines the problems faced by the parish, such as repeated flooding from rainfall and riverine bank overtopping.
- Study Area:** A description of the study area, which encompasses all of St. Tammany Parish, Louisiana. It highlights the parish's location on the northeast shore of Lake Pontchartrain and its proximity to major transportation waterways.
- Public Meeting Information:** A section providing details about upcoming public meetings, including the Slidell Public Meeting on Tuesday, August 15, 2023, and the Covington Public Meeting on Wednesday, August 16, 2023.
- Submit a Comment:** A section with a form for submitting comments on the study.
- 2023 Updated Draft Integrated Feasibility Report and Environmental Impact Statement:** A section with a link to the latest draft report.
- Additional Information:** A section with a link to the St. Tammany Parish, Louisiana Feasibility Study Review Plan.

The page also features a map of St. Tammany Parish, Louisiana, showing the study area and major cities. The map includes a legend with symbols for major cities, the WBDHU12, and the study area. The map shows the parish's location relative to the Gulf of Mexico and the Mississippi River.



TENTATIVELY SELECTED PLAN

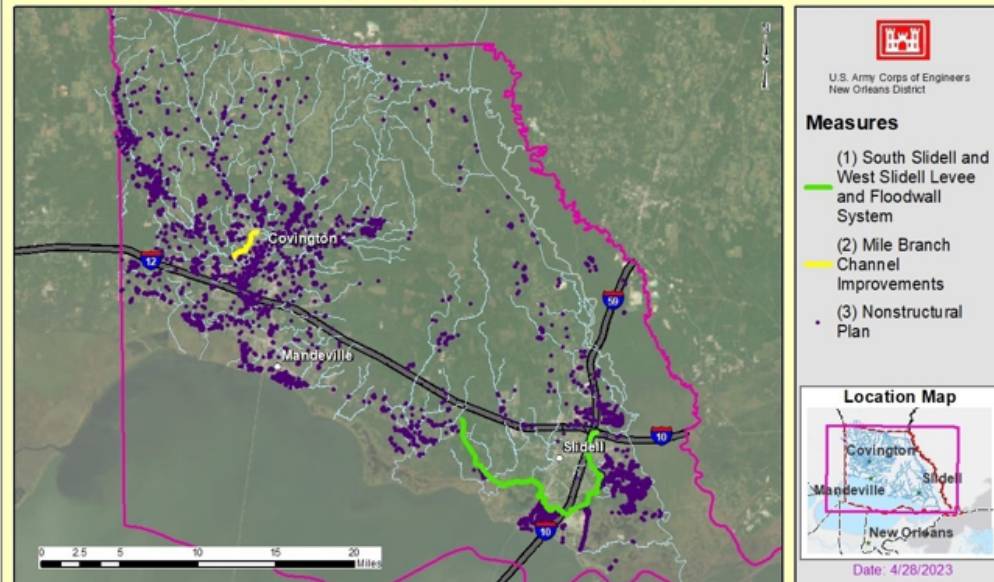
Comprehensive Plan to address flooding Parish wide includes structural measures to reduce flooding risk from coastal events (Costal Storm Risk Management-CSR), rainfall and riverine events (Flood Risk Management-FRM) and Nonstructural plans

TSP Components

- West Slidell and South Slidell Levees
- Mile Branch Channel Improvements
- Nonstructural home elevations and floodproofing for the rest of the Parish based on structures located in the 50-year flood plain (residual risk)

Project Cost	\$4,452,059,000
Benefits	\$402,762,000
Average Annual Costs	\$165,680,000
Net Benefits	\$237,083,000
Benefit to Cost Ratio	2.4

St. Tammany Feasibility Study: Optimized Tentatively Selected Plan Measures



This was provided by USACE at the STLDCD Regular June 2023 meeting.

The updated schedule was provided by USACE at the STLDCD Regular June 2023 meeting:

- Public Comment Period
 - Ended on Sept. 6, 2023
- Final Report
 - USACE currently Addressing Public Comments
 - USACE currently finalizing the Feasibility Study and EIS
- MVN Transmittal
 - Dec. 2023
- Chief's Report
 - May 2024

