



Fritchie Marsh – Salt Bayou Marsh Restoration Project

Project Location



Project Area of Interest

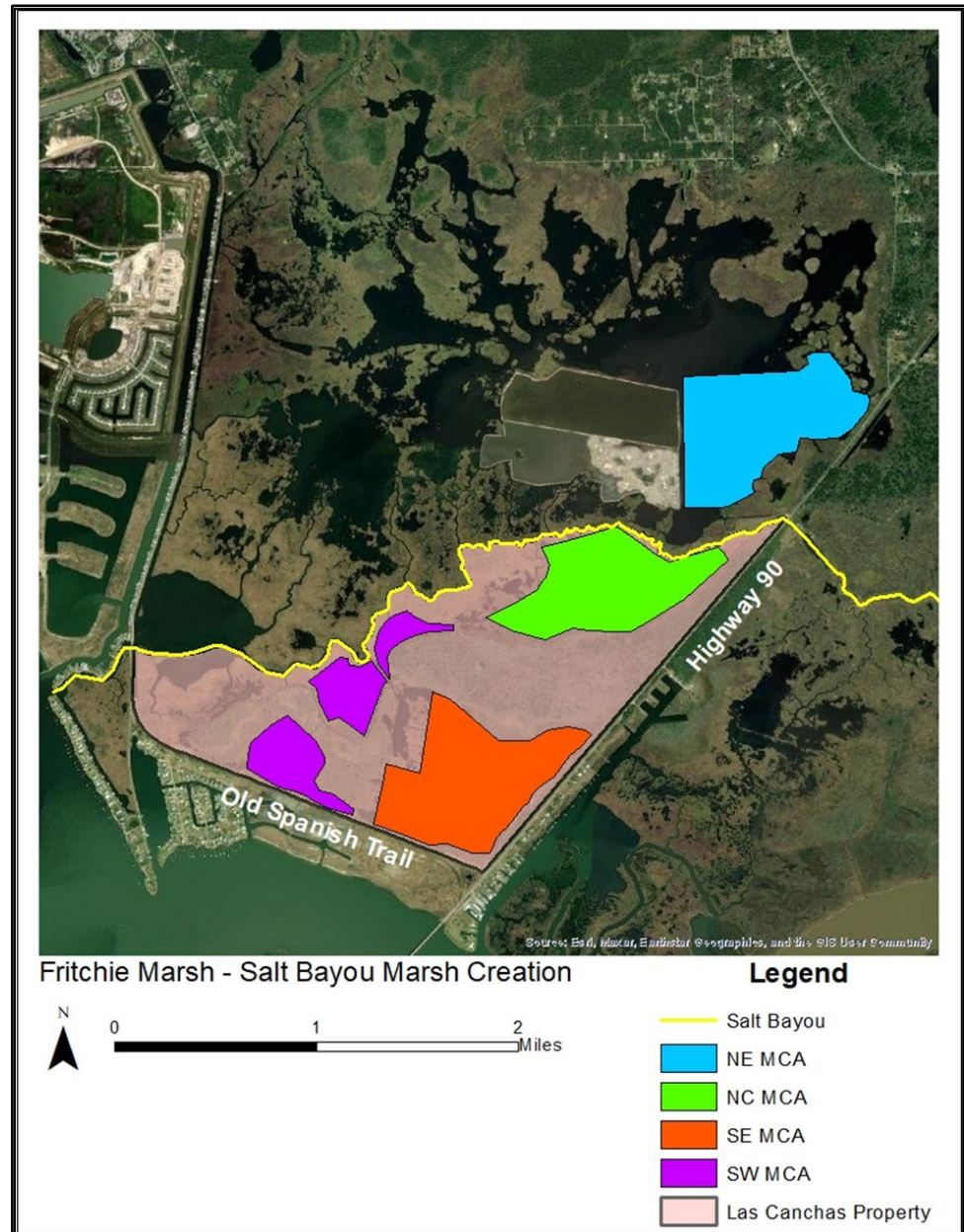
Tasks Performed:

- ✓ Data Gap Analysis
- ✓ Alternatives Analysis



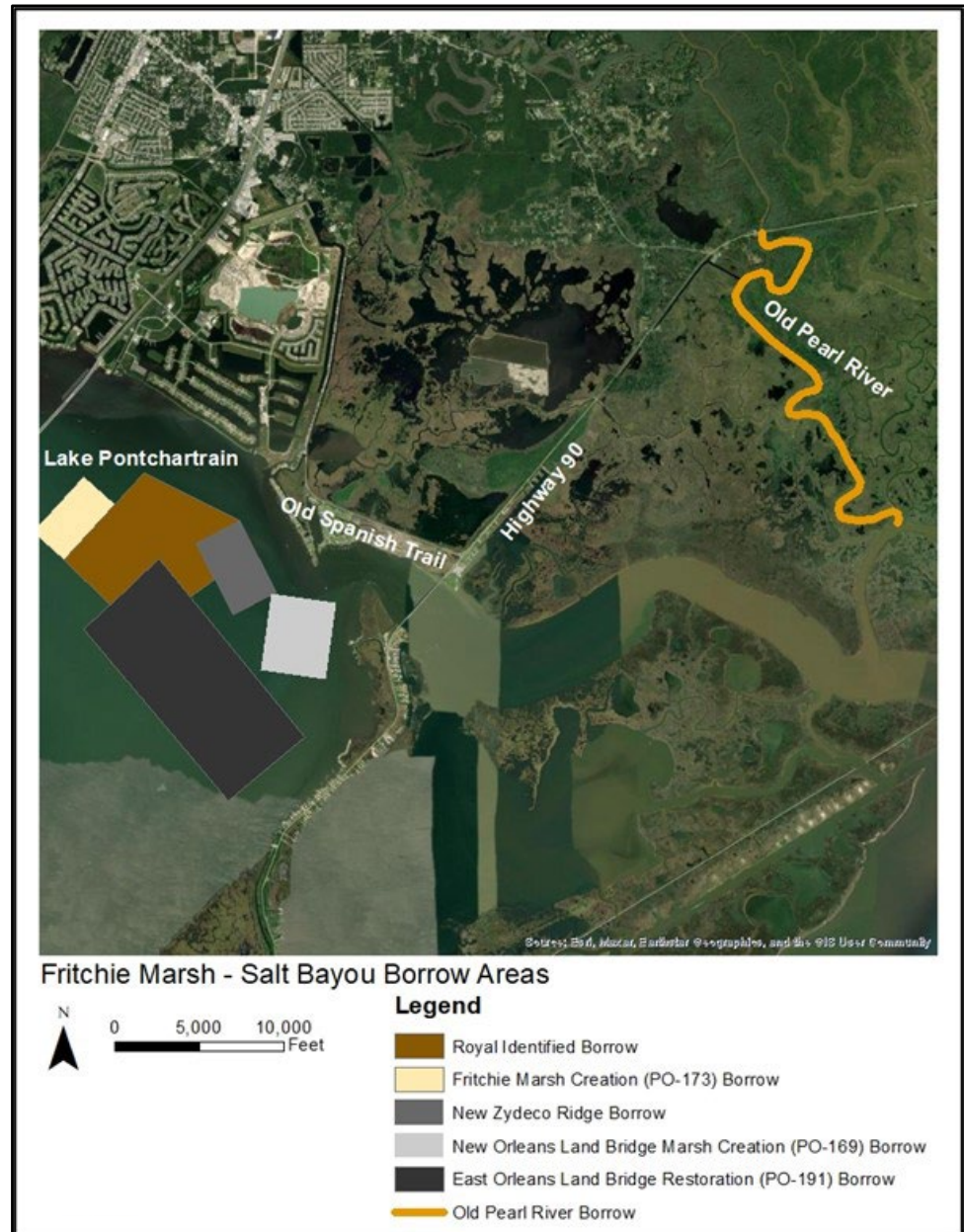
Project Alternatives

- Four Potential Marsh Creation Areas Identified



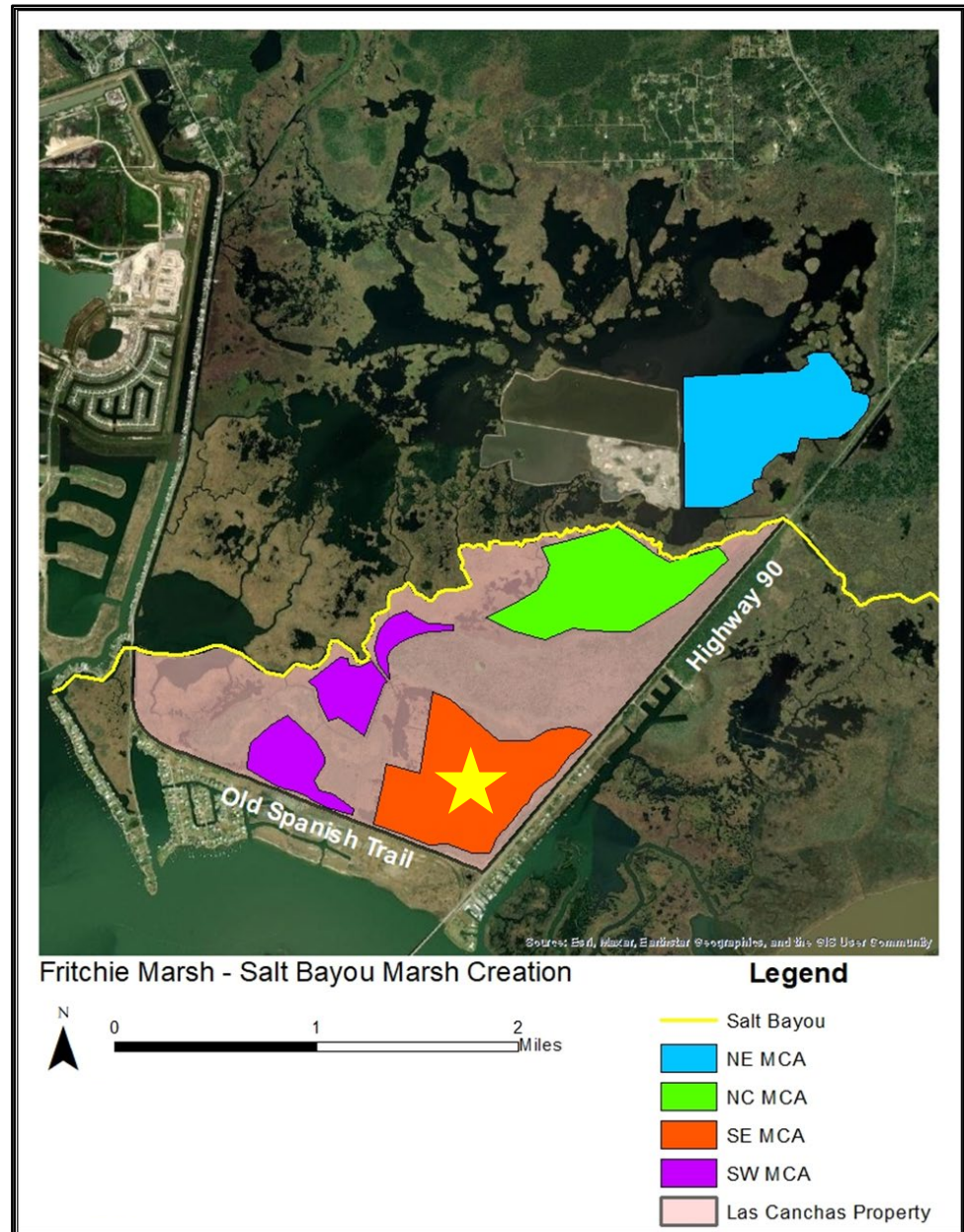
Project Alternatives

- Six Potential Borrow Sources Identified



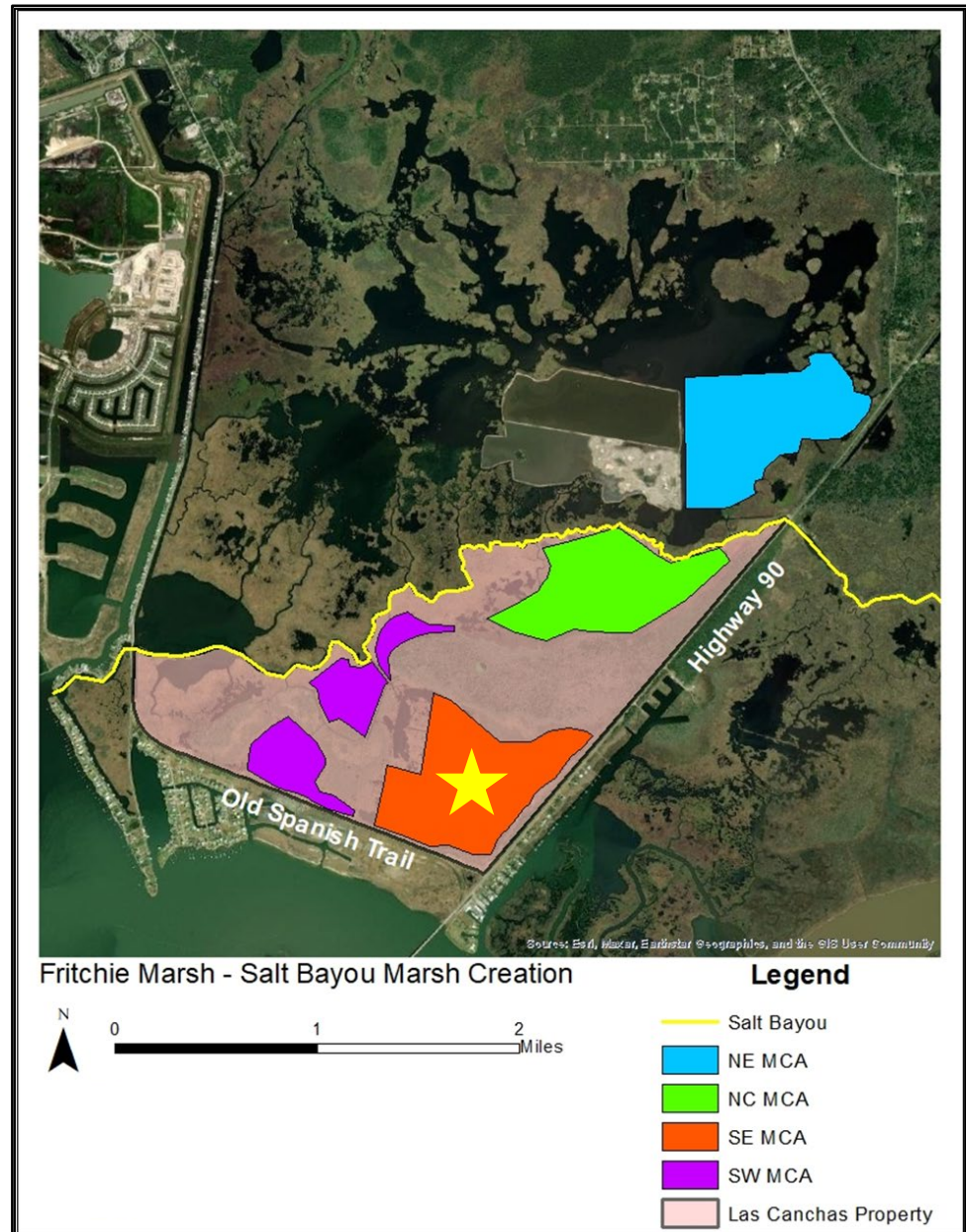
Project Alternatives

- Recommended Alternative Included SE MCA, PO-191 Borrow Area



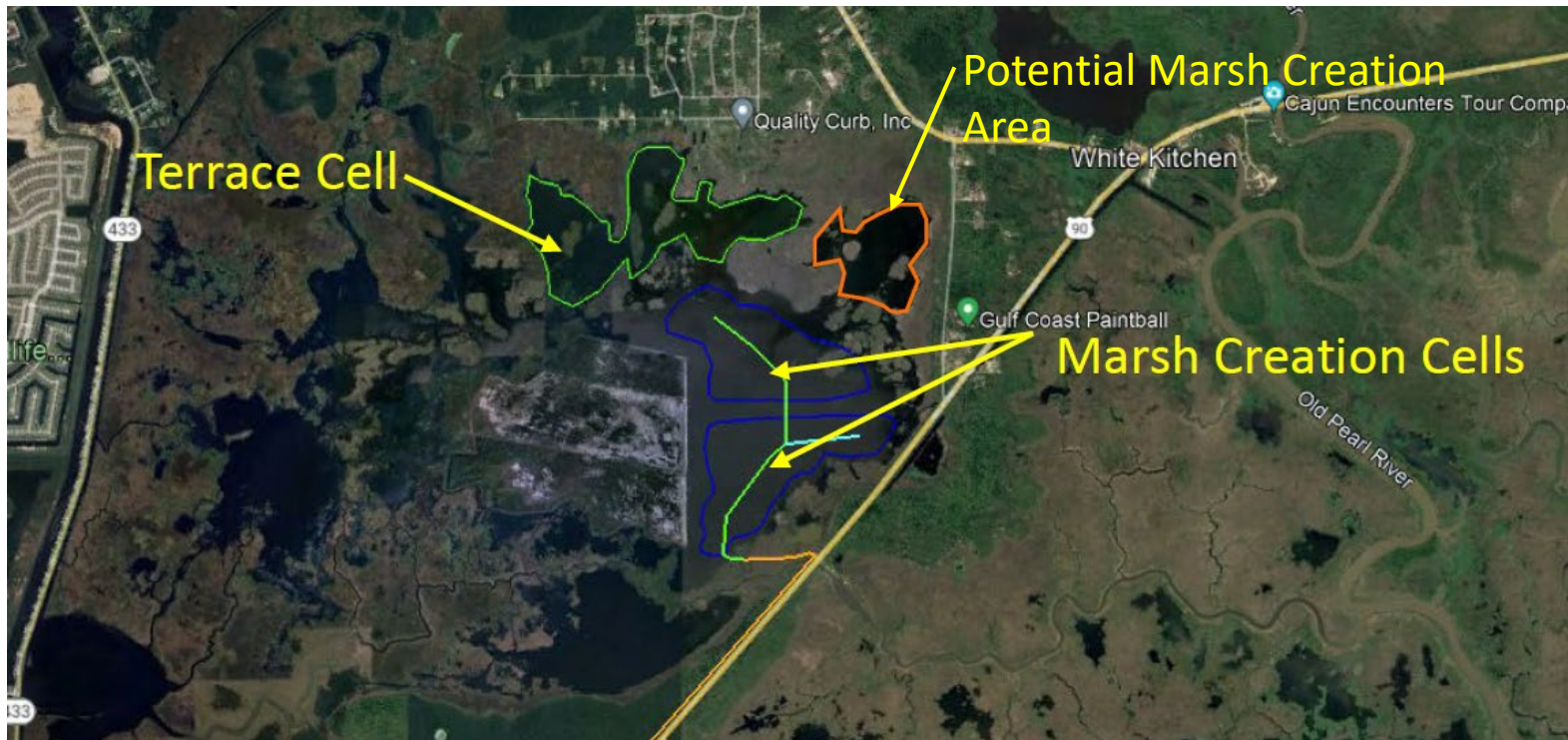
Landowner

- Las Conchas originally agreeable to the recommended SE MCA alternative.
- Expressed interest in exploring possibility of also including SW MCA.
- Royal was to investigate possible marsh nourishment in SW MCA.
- Never signed access agreement for data collection.
- Stopped communication.



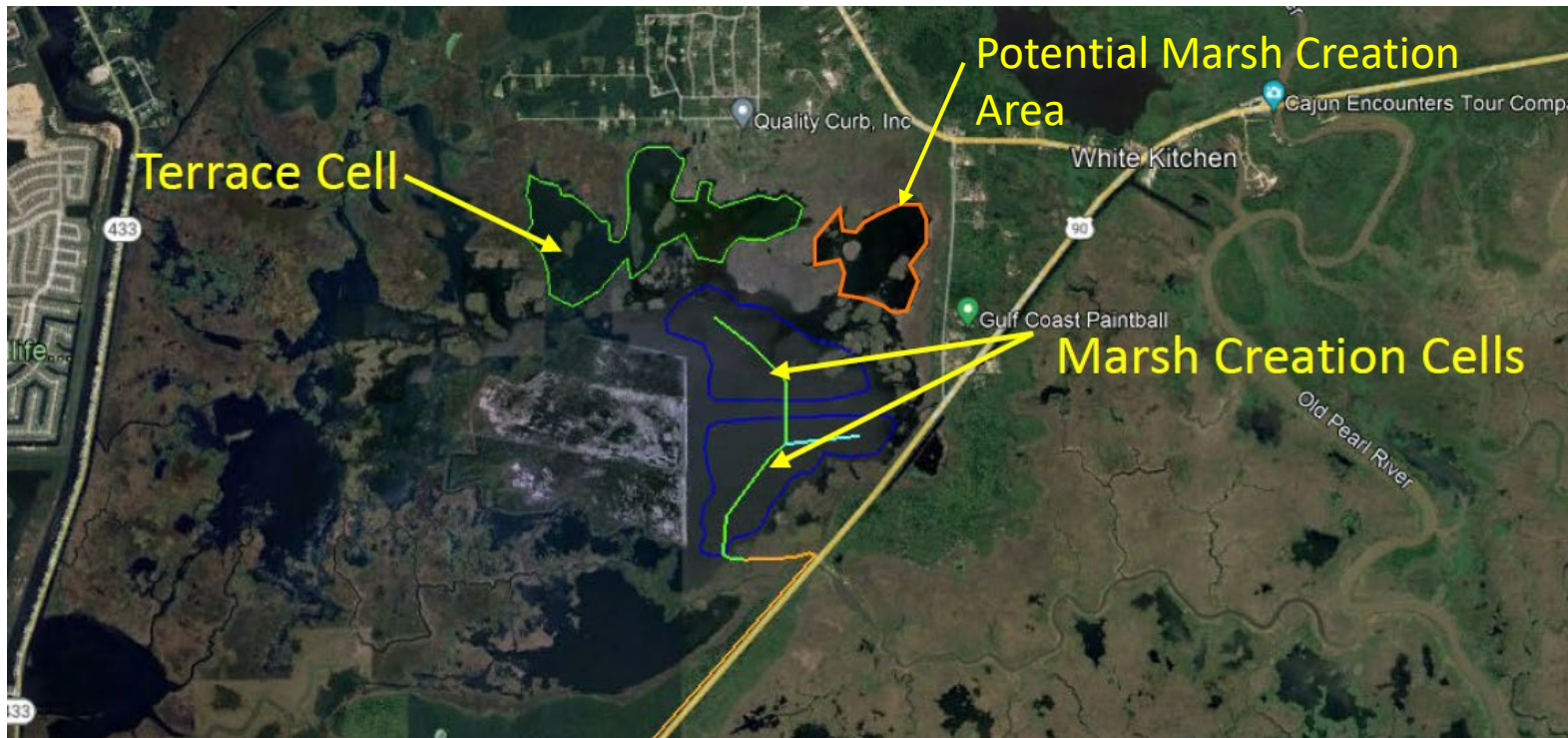
PO-173

- Fritchie Marsh Creation and Terracing
- CWPPRA Project - NOAA & CPRA
- NOAA is working on putting together project team.
- Amenable to us looking at their terrace cell or other open water areas as possible project location.



Next Steps

- Royal team to work with Big Branch Marsh National Refuge to identify suitable marsh creation or terrace site(s)
- Hydrologic & Hydraulic Modeling



Hydrologic & Hydraulic Modeling

Objectives:

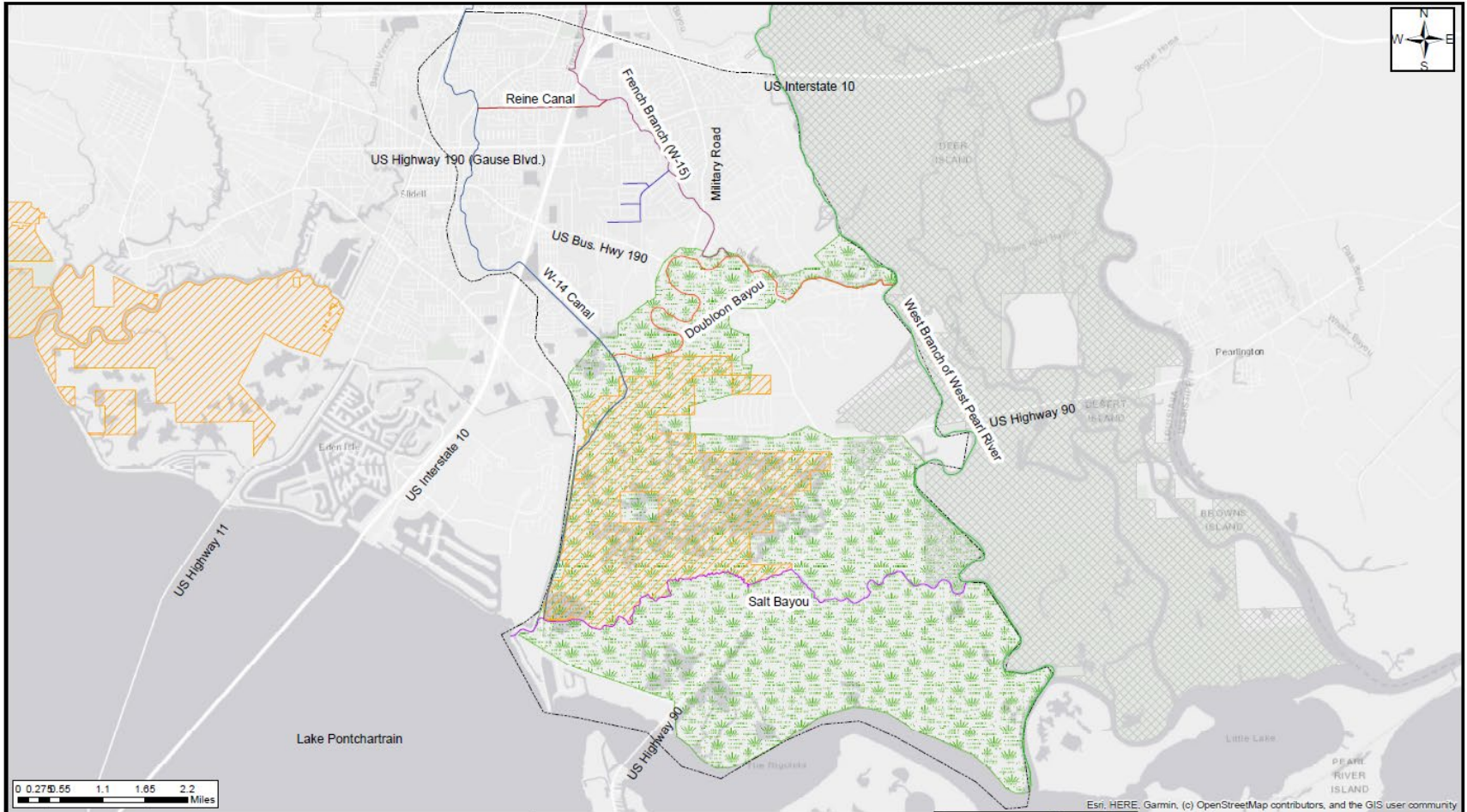
- Gain better understanding the areas that are prone to flooding
- Identify ways to improve or restore hydrologic flows
- Evaluate alternatives to the Fritchie Marsh/Salt Bayou Marsh Creation project which may include components such as marsh creation cells or terrace fields.

Neel-Schaffer Tasks Include:

- Existing Data Review
- Existing Hydrologic Analysis & Hydraulic Modeling
- Proposed Hydrologic & Hydraulic Modeling



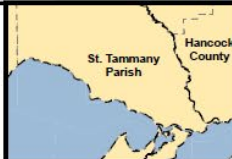
Hydrologic & Hydraulic Modeling



Legend	
Waterways	— W-15 Canal
— Doublebon Bayou	— West Pearl River
— French Branch Estates Drainage Lateral	▨ USFWS_BBM_Refuge_Boundary_2021
— Reine Canal	▨ LDWF_WMA_Refuge_111720
— Salt Bayou	▨ Military Rd. Study Area
— W-14 Canal	▨ Hydraulic Impact Area

Military Road Resiliency Project
Slidell, LA

 Proposed Project



Proposed Study Area for Military Road	
Contract Number	Figure Number
x-x	1

